

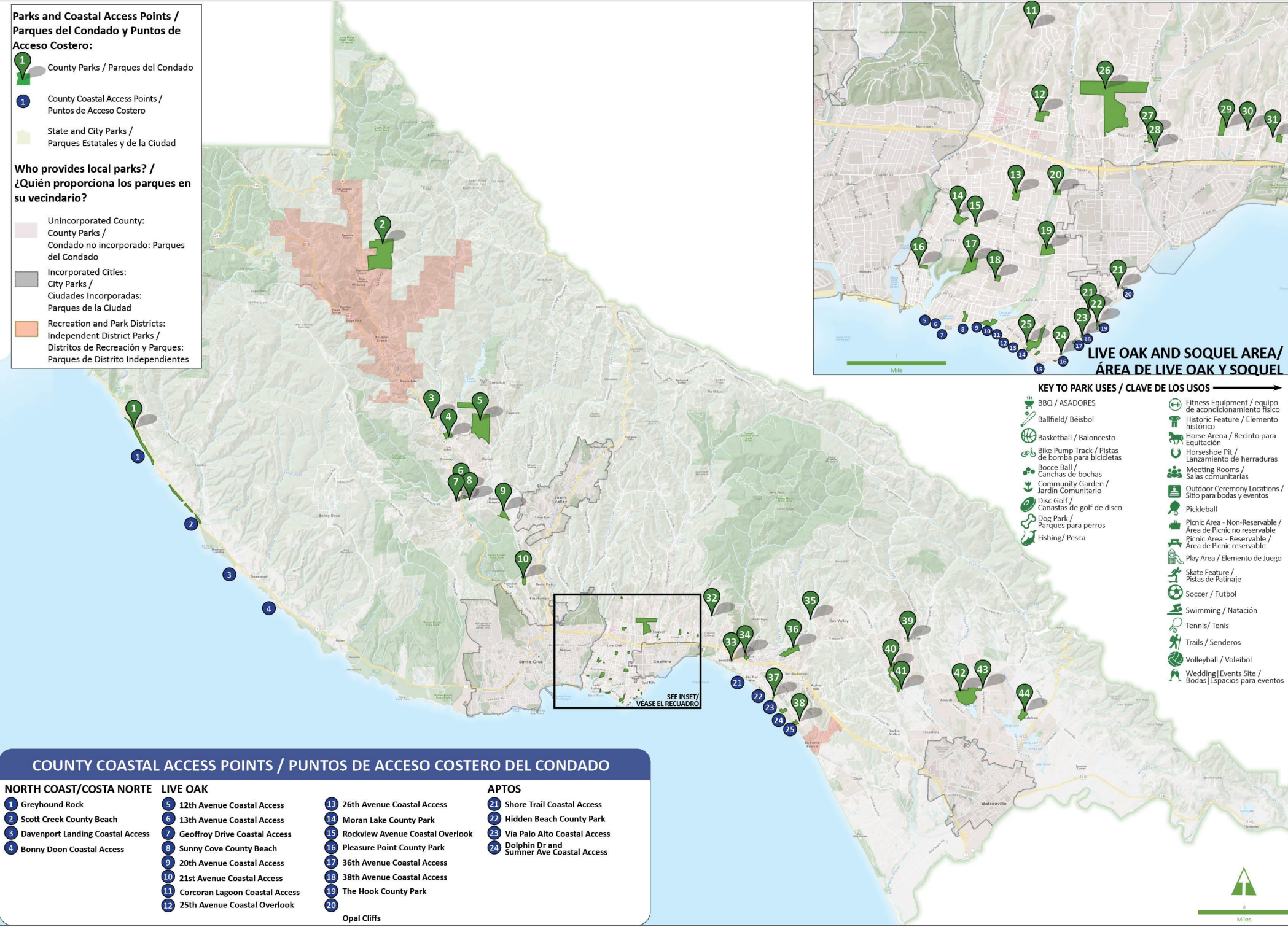
COUNTY PARKS, FACILITIES, AND COASTAL ACCESS POINTS / PARQUES DEL CONDADO, INSTALACIONES Y PUNTOS DE ACCESO COSTERO

Parks and Coastal Access Points / Parques del Condado y Puntos de Acceso Costero:

- County Parks / Parques del Condado
- County Coastal Access Points / Puntos de Acceso Costero
- State and City Parks / Parques Estatales y de la Ciudad

Who provides local parks? / ¿Quién proporciona los parques en su vecindario?

- Unincorporated County: County Parks / Condado no incorporado: Parques del Condado
- Incorporated Cities: City Parks / Ciudades Incorporadas: Parques de la Ciudad
- Recreation and Park Districts: Independent District Parks / Distritos de Recreación y Parques: Parques de Distrito Independientes



KEY TO PARK USES / CLAVE DE LOS USOS

BBQ / ASADORES	Fitness Equipment / equipo de acondicionamiento físico
Ballfield/ Béisbol	Historic Feature / Elemento histórico
Basketball / Baloncesto	Horse Arena / Recinto para Equitación
Bike Pump Track / Pistas de bomba para bicicletas	Horseshoe Pit / Lanzamiento de herraduras
Bocce Ball / Canchas de bochas	Meeting Rooms / Salas comunitarias
Community Garden / Jardín Comunitario	Outdoor Ceremony Locations / Sitio para bodas y eventos
Disc Golf / Canastas de golf de disco	Pickleball
Dog Park / Parques para perros	Picnic Area - Non-Reservable / Área de Picnic no reservable
Fishing/ Pesca	Picnic Area - Reservable / Área de Picnic reservable
	Play Area / Elemento de Juego
	Skate Feature / Pistas de Patinaje
	Soccer / Fútbol
	Swimming / Natación
	Tennis/ Tenis
	Trails / Senderos
	Volleyball/ Voleibol
	Wedding Events Site / Bodas Espacios para eventos

COUNTY PARKS AND USES / PARQUES DEL CONDADO Y USOS

NORTH COAST / COSTA NORTE

- 1 Greyhound Rock
- 2 Miller Property County Park
- 3 Ben Lomond County Park
- 4 Highlands County Park
- 5 Quail Hollow Ranch County Park
- 6 Felton Deck
- 7 Felton Discovery County Park
- 8 Felton Covered Bridge County Park
- 9 Michael Gray Field County Park
- 10 Graham Hill Showgrounds

SAN LORENZO VALLEY

- 11 Santa Cruz Gardens County Park
- 12 Winkle Farm County Park
- 13 Chanticleer County Park
- 14 Jose Avenue County Park
- 15 Hestwood County Park
- 16 Twin Lakes County Park
- 17 Simpkins Family Swim Center
- 18 Felt Street County Park
- 19 Brommer Street County Park
- 20 Coffee Lane County Park
- 21 Floral County Park
- 22 The Hook County Park
- 23 East Cliff County Parkway
- 24 Pleasure Point County Park
- 25 Moran Lake County Park

LIVE OAK | UNINCORPORATED SANTA CRUZ / LIVE OAK | SANTA CRUZ NO INCORPORADO

- 11 Santa Cruz Gardens County Park
- 12 Winkle Farm County Park
- 13 Chanticleer County Park
- 14 Jose Avenue County Park
- 15 Hestwood County Park
- 16 Twin Lakes County Park
- 17 Simpkins Family Swim Center
- 18 Felt Street County Park
- 19 Brommer Street County Park
- 20 Coffee Lane County Park
- 21 Floral County Park
- 22 The Hook County Park
- 23 East Cliff County Parkway
- 24 Pleasure Point County Park
- 25 Moran Lake County Park

SOQUEL

- 26 Anna Jean Cummings County Park
- 27 Heart of Soquel County Park
- 28 Soquel Lions County Park
- 29 The Farm County Park
- 30 Richard Vessey County Park
- 31 Willowbrook County Park

APTOS

- 32 Charmichael Trail
- 33 Seacliff Village County Park
- 34 Aptos Village County Park
- 35 Valencia Hall
- 36 Polo Grounds County Park
- 37 Hidden Beach County Park
- 38 Seascapes County Park

WATSONVILLE | CORRALITOS

- 39 Aldridge Lane County Park
- 40 Scott County Park
- 41 Freedom Lake County Park
- 42 Pinto Lake County Park
- 43 Mesa Village County Park
- 44 Whiting County Park

COUNTY COASTAL ACCESS POINTS / PUNTOS DE ACCESO COSTERO DEL CONDADO

- | | | |
|------------------------------------|-------------------------------------|---|
| NORTH COAST/COSTA NORTE | LIVE OAK | APTOS |
| 1 Greyhound Rock | 5 12th Avenue Coastal Access | 21 Shore Trail Coastal Access |
| 2 Scott Creek County Beach | 6 13th Avenue Coastal Access | 22 Hidden Beach County Park |
| 3 Davenport Landing Coastal Access | 7 Geoffrey Drive Coastal Access | 23 Via Palo Alto Coastal Access |
| 4 Bonny Doon Coastal Access | 8 Sunny Cove County Beach | 24 Dolphin Dr and Summer Ave Coastal Access |
| | 9 20th Avenue Coastal Access | |
| | 10 21st Avenue Coastal Access | |
| | 11 Corcoran Lagoon Coastal Access | |
| | 12 25th Avenue Coastal Overlook | |
| | 13 26th Avenue Coastal Access | |
| | 14 Moran Lake County Park | |
| | 15 Rockview Avenue Coastal Overlook | |
| | 16 Pleasure Point County Park | |
| | 17 36th Avenue Coastal Access | |
| | 18 38th Avenue Coastal Access | |
| | 19 The Hook County Park | |
| | 20 Opal Cliffs | |